



APPAREL TO HELP A PLANET IN CRISIS

Product Information Sheet

Colours



Please note: the colours shown above are for guidance only and, because of paper printers or computer monitors inconsistencies, will differ from actual products.

Availability

EarthPositive™ products are available from stock throughout Europe, North America and Japan.

The products in the range will remain on sale for at least 24 months, although the range on offer will be extended to include more colours and new styles for adults, children and babies.

Further information is available from the EarthPositive™ brand's website www.EarthPositiveOnline.com

Quality

All EarthPositive™ products are made of **100% Certified Organic Cotton** from India, and are certified under the Global Organic Textile Standard (Soil Association licence no. DK19090).

The garments are produced to the highest **ethical standards** - the production chain has been audited by the Fair Wear Foundation in September 2007.

EarthPositive™ is manufactured in **carbon neutral** facilities, using renewable energy wind turbines.

Cotton textiles production is one of the major causes of global warming and is associated with much hardship and suffering among farmers and workers.

Buy Your Cotton Responsibly



Care

EarthPositive™ recommends hand washing or cool machine washing on short cycle, using ecologically friendly detergents, and line drying.

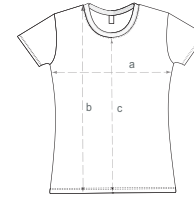
Domestic machine washing and tumble drying time and time again, contributes up to 80% of the energy used by a conventional cotton garment in its lifetime.

Eco-friendly detergents have minimal aquatic toxicity and will biodegrade quickly and completely.



SAVE THE CLIMATE
WASH COOL - LINE DRY

EarthPositive™ product range on 1/1/2008



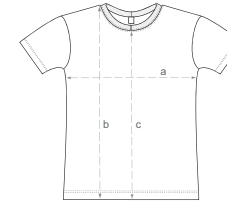
Women's T-shirt
Code: EP02
Single Jersey 145 g/m²

Sizes:

| | XS | S | M | L | XL |
|---|-----|------|------|------|------|
| a | 16½ | 17½ | 18½ | 19½ | 20½ |
| | 42 | 44.5 | 47 | 49.5 | 52 |
| b | 24½ | 25½ | 25½ | 26 | 26 |
| | 63 | 64 | 65 | 66 | 66 |
| c | 20½ | 20½ | 21 | 21½ | 21½ |
| | 52 | 53 | 53.5 | 54.5 | 54.5 |

Colours:

| | |
|-------|-------------|
| Black | Light Blue |
| White | Navy Blue |
| Pink | Kelly Green |
| Red | Dark Grey |
| | Brown |



Men's T-shirt
Code: EP01
Single Jersey 155 g/m²

Sizes:

| | S | M | L | XL | XXL |
|---|------|-----|------|-----|------|
| a | 19½ | 20½ | 22 | 23½ | 25½ |
| | 50 | 53 | 56 | 60 | 64 |
| b | 26½ | 28 | 28½ | 28½ | 30 |
| | 68 | 71 | 73 | 73 | 76 |
| c | 23 | 24 | 24½ | 24½ | 25½ |
| | 58.5 | 61 | 62.5 | 62 | 64.5 |

Colours:

| | |
|-------------|-------------|
| Black | Navy Blue |
| White | Light Green |
| Yellow | Kelly Green |
| Red | Moss Green |
| Dark Red | Light Grey |
| Light Blue | Dark Grey |
| Bright Blue | Brown |



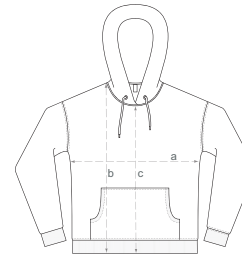
Men's Polo
Code: EP21
Piqué 180 g/m²

Sizes:

| | S | M | L | XL | XXL |
|---|------|------|-----|------|------|
| a | 20½ | 21½ | 22½ | 24 | 25 |
| | 52 | 55 | 58 | 61 | 63.5 |
| b | 26½ | 27½ | 28½ | 29½ | 30 |
| | 68 | 70 | 73 | 75 | 76 |
| c | 24½ | 25 | 26 | 26½ | 27 |
| | 61.5 | 63.5 | 66 | 67.5 | 68.5 |

Colours:

| |
|-------|
| Black |
| White |



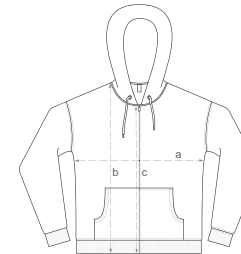
Men's Hooded Pullover
Code: EP61P
3-ply Fleece 310 g/m²

Sizes:

| | S | M | L | XL |
|---|------|------|------|------|
| a | 22½ | 24½ | 25½ | 27½ |
| | 57.5 | 61.5 | 65.5 | 69.5 |
| b | 29½ | 30 | 31½ | 32 |
| | 74.5 | 76.5 | 79.5 | 81.5 |
| c | 26½ | 27 | 28 | 28½ |
| | 66.5 | 68.5 | 71 | 73 |

Colours:

| |
|-------|
| Black |
|-------|



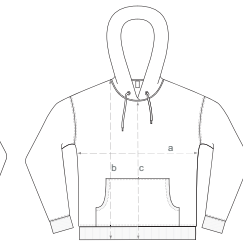
Men's Hooded Zip-up
Code: EP61Z
3-ply Fleece 310 g/m²

Sizes:

| | S | M | L | XL |
|---|-----|-----|------|------|
| a | 21½ | 22½ | 24½ | 25½ |
| | 55 | 58 | 61.5 | 65 |
| b | 28½ | 29½ | 30½ | 31½ |
| | 72 | 74 | 77.5 | 79.5 |
| c | 23½ | 24½ | 25½ | 26 |
| | 60 | 62 | 64 | 66 |

Colours:

| |
|-------|
| Black |
|-------|



Women's Hooded Pullover
Code: EP62P
3-ply Fleece 290 g/m²

Sizes:

| | XS | S | M | L |
|---|-----|-----|-----|-----|
| a | 18 | 19 | 20 | 21½ |
| | 46 | 48 | 51 | 54 |
| b | 23½ | 24½ | 26½ | 27½ |
| | 59 | 63 | 67 | 70 |
| c | 20 | 21½ | 22½ | 23½ |
| | 51 | 54 | 58 | 60 |

Colours:

| |
|-------|
| Black |
|-------|



Women's Hooded Zip-up
Code: EP62Z
3-ply Fleece 290 g/m²

Sizes:

| | XS | S | M | L |
|---|------|------|------|------|
| a | 17½ | 18½ | 19½ | 20½ |
| | 44.5 | 47 | 49.5 | 52 |
| b | 24½ | 25 | 26½ | 27½ |
| | 61.5 | 63.5 | 67.5 | 70.5 |
| c | 21 | 21½ | 23 | 24½ |
| | 53.5 | 55.5 | 58.5 | 61.5 |

Colours:

| |
|-------|
| Black |
|-------|